

## GlasCraft's Fiberglass Cutters

Exceptionally quiet, GlasCraft's unique cutter maintains 100% torque to the air motor for unchallenged high and low fiber output, and provides the flexibility to pull fiber from long distances.

All GlasCraft choppers feature superior airflow which results in a low operating temperature and the best performance with soft glass.

### B-410 Cutter

- Unique air flow design results in cooler temperature.
- Several snout options to efficiently disperse glass in both large and small parts.
- Adjustable throttle for output control.
- Efficiently pulls 1 or 2 strands of glass.



### B-510 Cutter

- Wide surface area idler bearing allows for even glass disbursement and minimizes glass hang up.
- Blower adjustment to help control temperature and flow of the glass.
- New design cutter wheel for quick & safe blade change.
- Automatically keeps proper tension between the blade and wheel for longer tire life and cooler operating temperature.
- Fully adjustable snout to easily set the most efficient angle into the resin pattern.
- Adjustable throttle for output control
- Efficiently pulls up to 3 strands of glass.



## Quality, Dependability and Economy

Engineered to deliver outstanding performance, GlasCraft rugged, reliable Chopper systems are designed with fewer wear items and consume fewer replacement parts than other manufacturers. With reduced service expenses and less revenue lost due to downtime, GlasCraft's Chopper Systems are highly economical to own and operate.

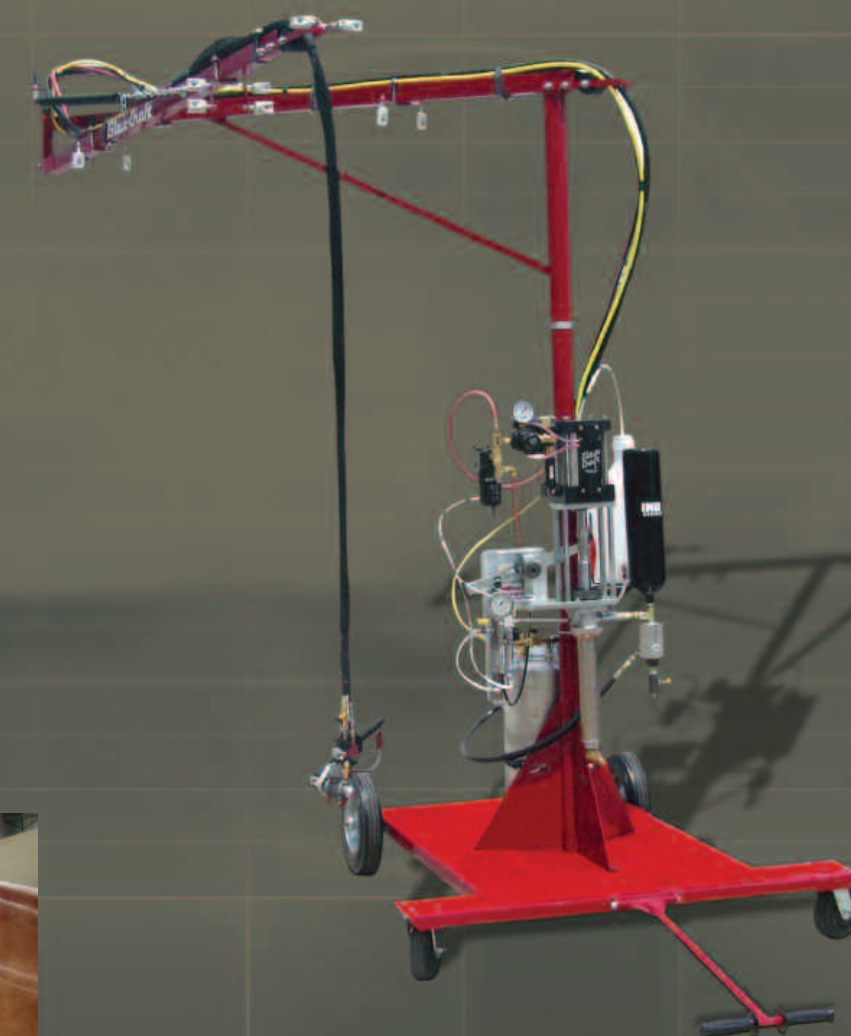
## SYSTEM SPECIFICATIONS

	INDy 11:1	INDy 20:1	HVRP 17:1
<b>Air Requirement with cutter</b>	25 cfm @ 100psi 700 l / min @ 6.8 bar	25 cfm @ 100psi 700 l / min @ 6.8 bar	30 cfm @ 100psi 850 l / min @ 6.8 bar
<b>Air Requirement wet-out</b>	17 cfm @ 100psi 480 l / min @ 6.8 bar	17 cfm @ 100psi 480 l / min @ 6.8 bar	22 cfm @ 100psi 620 l / min @ 6.8 bar
<b>Material Pump Capacity *</b>	2.5 Gallon / Minute 9.5 liters / Minute	1.6 Gallon / Minute 6.0 liters / Minute	4.1 Gallon / Minute 15.5 liters / Minute
<b>Material Pump Output</b>	.050 gal per cycle 20 cycles = 1 Gallon 5 cycles = 1 liter	.032 gal per cycle 31 cycles = 1 Gallon 8 cycles = 1 liter	.082 gal per cycle 12 cycles = 1 Gallon 3 cycles = 1 liter
<b>Catalyst Slave Pump Range</b>	0.5% to 3.5%	0.8% to 5.6%	0.5% to 2.9%

\* Material pump capacity is based on 50 cycles per minute. Higher cycle rates can be achieved depending on material viscosity, material temperature, and volume of air.

## OPTIONS

- All guns are available in automatic configuration
- Rated inline heater
- Extended Hose Lengths
- Wall Mount
- Cart, Mast & Boom



5845 West 82nd Street  
Indianapolis, IN 46278

Phone: 317-875-5592  
Fax: 317-875-5456  
Email: sales@glascraft.com

www.glascraft.com



a COHESANT company



## Chopper & Wet-out Systems

Low emission chop and wet-out systems for the composites industry

# The GlasCraft Solution

As the industry innovator since 1959, we design, manufacture and market industry leading metering, mixing and dispensing equipment for the Composites industry. GlasCraft leads these markets with the most advanced product and service solutions for an ever-changing marketplace.

At GlasCraft, we understand the need for reduced emissions, increased transfer efficiency, and improved air quality. We have introduced numerous innovations that have helped the industry capitalize on new material technologies and meet the demands of today's environmentally sensitive market.

GlasCraft systems are manufactured under strict ISO 9001 guidelines to keep your production running. Our guns are designed for reliable material delivery, long-lasting service life, and the ultimate in operator comfort. Easy maintenance and low parts consumption results in the lowest cost of operation over the life of the equipment and maximum fabricator profits.



## GlasCraft Chopper & Wet-out system features

### Resin Pump...

- Reliable, low maintenance resin pump features an extremely precise air pilot valve on the air motor, and 4" stroke to deliver high efficiency performance at the lowest possible pressure.
- Triple lip spring loaded seals and hardened cylinders, seats and valves provide long wear life, while our quick change seal design makes pump maintenance easy and fast.



### Standard Pump:

- 11:1 Ratio

### Optional Pumps:

- 20:1 ratio for Low VOC (High Viscosity) materials
- 17:1 HVRP High Volume Pump - Up to 5 gallon (19 l) / minute

### Catalyst Pump...

- Instantly and infinitely adjustable ensuring that the pump will run at any desired catalyst percentage without the hassle of constant adjustments.
- Identical dual seals on the upper pump housing assure that the pump will maintain consistent fluid pressure and volume of catalyst from pump to gun.
- Completely stainless steel construction.



## The Multiport Impingement Nozzle...

### The Key to Low Emission Dispensing Excellence

The patented Multiport Impingement Nozzle produces superior results. This highly efficient performance proven dispense nozzle, designed for open mold processing, is state-of-the-art and field proven in thousands of applications worldwide. This nozzle is available on both the INDy and Formula guns.



### The Most Consistent and Uniform Dispense Pattern

The INDy's Multiport Impingement technology utilizes a third column of delivery intersecting in the center of the two outside columns. This provides a stabilizing influence on the resin to deliver the most consistent, uniform dispense pattern.



## INDy Low Emission Spray Guns

- **Simple to Maintain Design** - Simple & reliable heavy duty material valve and seat design = more uptime = more profit for your operation!
- **Excellent Pattern Control** - Highly efficient, zero-waste dispensing for both large and small parts.
- **Ergonomic Design** - Lightweight, easy to use design eliminates fatigue.

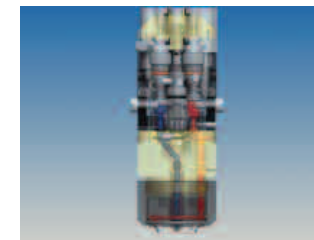
### INDy Internal Mix

- Extended mix area and precision check valves results in the best mix.
- Automatically balanced fluid pressure assures proper catalyzation.



### INDy X External Mix

- Unique catalyst delivery assures complete integration to the resin spray pattern.
- No solvent needed to flush.



All INDy guns feature a reliable material valve & seat design

## Formula Low Emission Spray Guns

- **"No needles" design** - GlasCraft's unique fluid delivery system assures the most reliable performance along with the lowest maintenance. This feature also allows for flexibility in your choice of spray materials.
- **Special hardened valves** - This unique heavy-duty valve design is specially engineered for today's low VOC formulations.
- **Easy access to valve packings** - Quick and simple replacement of the valve packings results in less maintenance downtime = more uptime = more profit for your operation!
- **Patented dual air piston** - The most powerful trigger actuation available on the market!

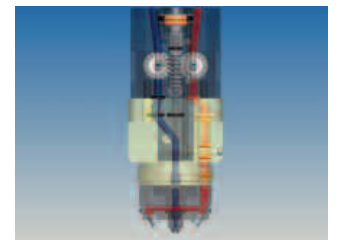
### Formula Internal Mix

- Fully adjustable pattern control & precision check valves to automatically balance fluid pressures.
- Extended mix area results in the best mix.



### Formula X External Mix

- Unique catalyst delivery assures complete integration to the resin spray pattern.
- No solvent needed to flush.



The air piston actuated, gear driven material valve design of the Formula gun has been a part of GlasCraft's gun technology since 1979

