

MCG (Multiple Color Gel-Coat) System

The factory-assembled MCG Multi-Color Gel-Coat System has been designed to provide you the most efficient method available for production that requires numerous gel-coat colors, or continuous change of colors.

The quick, efficient color change of the MCG Multi-Color Gel-Coat System eliminates wasted material and time.

The standard two-color system can be expanded to an unlimited number of colors by adding optional fluid sections.

One system for both resin and gel-coat dispensing! Quickly switch from gel-coat to resin wet-out or chop with no wasted material.



Quality, Dependability and Economy

Engineered to deliver outstanding performance, our rugged, reliable Gel-Coat systems are designed with fewer wear items and consume fewer replacement parts than other manufacturers. With reduced service expenses and less revenue lost due to downtime, GlasCraft's Gel-Coat Systems are highly economical to own and operate.



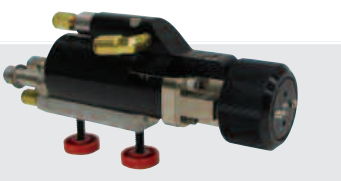
SYSTEM SPECIFICATIONS

	INDy or MCG 11:1	INDy or MCG 20:1	HVRP 17:1
Air Requirement	17 cfm @ 100psi 480 l / min @ 6.8 bar	17 cfm @ 100psi 480 l / min @ 6.8 bar	22 cfm @ 100psi 620 l / min @ 6.8 bar
Material Pump Capacity *	2.5 Gallon / Minute 9.5 liters / Minute	1.6 Gallon / Minute 6.0 liters / Minute	4.1 Gallon / Minute 15.5 liters / Minute
Material Pump Output	.050 gal per cycle 20 cycles = 1 Gallon 5 cycles = 1 liter	.032 gal per cycle 31 cycles = 1 Gallon 8 cycles = 1 liter	.082 gal per cycle 12 cycles = 1 Gallon 3 cycles = 1 liter
Catalyst Slave Pump Range	0.5% to 3.5%	0.8% to 5.6%	0.5% to 2.9%

* Material pump capacity is based on 50 cycles per minute. Higher cycle rates can be achieved depending on material viscosity, material temperature, and volume of air.

OPTIONS

- All guns are available in automatic configuration
- Rated inline heater
- Extended Hose Lengths
- Wall Mount
- Cart, Mast & Boom



GlasCraft
DISPENSING EXCELLENCE

5845 West 82nd Street
Indianapolis, IN 46278

Phone: 317-875-5592
Fax: 317-875-5456
Email: sales@glascraft.com

www.glascraft.com



Certified

a COHESANT company



ADS
ADVANCED DISPENSE
SYSTEMS



Gel-Coat Dispense Systems

Low emission Gel-Coat systems for the composites industry

The GlasCraft Solution

As the industry innovator since 1959, we design, manufacture and market industry leading metering, mixing and dispensing equipment for the Composites industry. GlasCraft leads these markets with the most advanced product and service solutions for an ever-changing marketplace.

Many gel-coat manufacturers have introduced low VOC gel-coats to help fabricators reduce their emission levels. Working closely with these material manufacturers, GlasCraft designed the INDy Gel-Coat series of dispensing solutions to optimize the advantages these materials offer. As gel-coat technology changes to meet diverse market demands, GlasCraft will continue to engineer advanced equipment for these evolving materials.

GlasCraft Gel-Coat dispense systems offer smooth and accurate gel-coat application. Our systems are designed to keep your process running. Simplistic design means longer system life and allows for little or no down time. Our Multi-Color Gel-Coat (MCG) Systems offers the durability and reliability of a standard Gel-Coat system, while allowing operators to feed an unlimited number of colors with additional fluid sections. GlasCraft Gel-Coat guns are designed for reliable material delivery, long lasting service life, the ultimate in operator comfort, and maximum fabricator profits.



Resin Pump...

- Reliable, low maintenance gel-coat pump features an extremely precise air pilot valve on the air motor, and 4" stroke to deliver high efficiency performance at the lowest possible spraying pressure.
- Triple lip spring loaded seals and hardened cylinders, seats and valves provide long wear life, while our quick change seal design makes pump maintenance easy and fast.

Standard Pump:

- 11:1 Ratio

Optional Pumps:

- 20:1 ratio for Low VOC (High Viscosity) materials
- 17:1 HVRP High Volume Pump - Up to 1 gallon (3.8 l) / minute



Catalyst Pump...

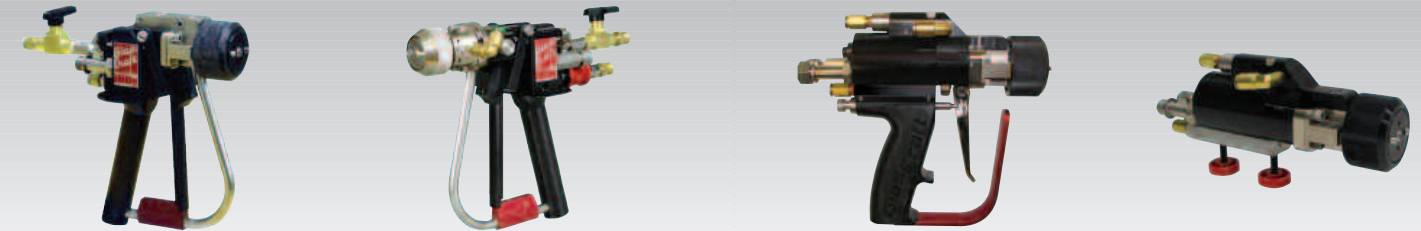
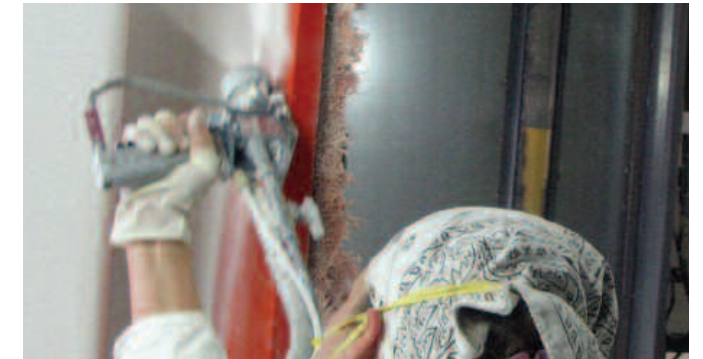
- Instantly and infinitely adjustable ensuring that the pump will run at any desired catalyst percentage without the hassle of constant adjustments.
- Identical dual seals on the upper pump housing assure that the pump will maintain consistent fluid pressure and volume of catalyst from pump to gun.
- Completely stainless steel construction.



Air Assist Containment (AAC)

GlasCraft's Gel-Coat guns utilize the patented AAC feature to produce the most uniform and consistent low-emission spray pattern with stabilizing air streams.

This GlasCraft-exclusive innovation dramatically reduces waste from over-spray and saves you money on every part produced!



INDy & INDy X AAC Low Emission Spray Guns

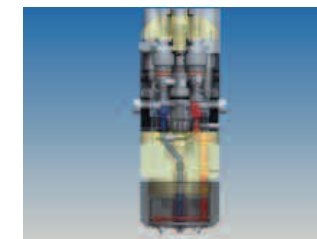
- **Highest Quality Finish** - The volume control on the INDy Gel-Coat guns assures the highest quality finish with no porosity.
- **Simple to Maintain Design** - Simple & reliable material valve and seat design = more uptime = more profit for your operation!
- **Excellent Pattern Control** - Highly efficient, zero-waste dispensing for both large and small parts.
- **Ergonomic Design** - Lightweight, easy to use design eliminates fatigue.

INDy Internal Mix

- Fully adjustable pattern control & precision check valves to automatically balance fluid pressures.
- Extended mix area results in the best mix.

INDy X External Mix

- Unique catalyst delivery assures complete integration to the gel-coat spray pattern.
- No solvent needed to flush.



All INDy guns feature a reliable material valve & seat design

Formula & Formula X AAC Low Emission Spray Gun

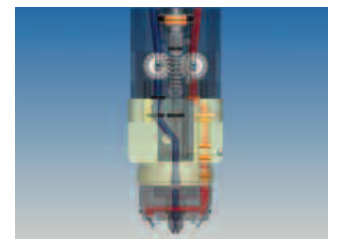
- **"No needles" design** - GlasCraft's unique fluid delivery system assures the most reliable performance along with the lowest maintenance. This feature also allows for flexibility in your choice of spray materials.
- **Special hardened valves** - This unique heavy-duty valve design is specially engineered for today's low VOC formulations.
- **Easy access to valve packings** - Quick and simple replacement of the valve packings results in less maintenance downtime = more uptime = more profit for your operation!
- **Patented dual air piston** - The most powerful trigger actuation available on the market!

Formula Internal Mix

- Fully adjustable pattern control & precision check valves to automatically balance fluid pressures.
- Extended mix area results in the best mix.

Formula X External Mix

- Unique catalyst delivery assures complete integration to the gel-coat spray pattern.
- No solvent needed to flush.



The air piston actuated, gear driven material valve design of the Formula gun has been a part of GlasCraft's gun technology for over 25 years.

